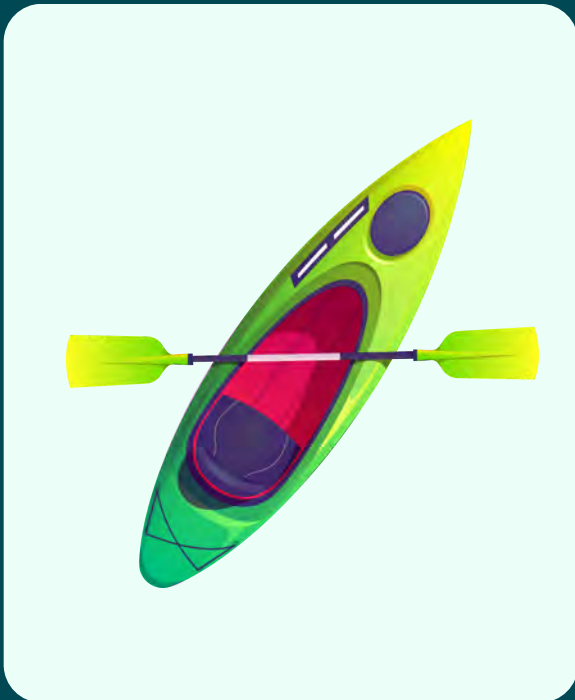




# Swim Guide Report 2025

Yadkin Riverkeeper



# Thank You to Our Swim Guide Sponsors!

**Bill Jenkins &  
Pam Townsend**



**CUBE HYDRO™**  
CAROLINAS

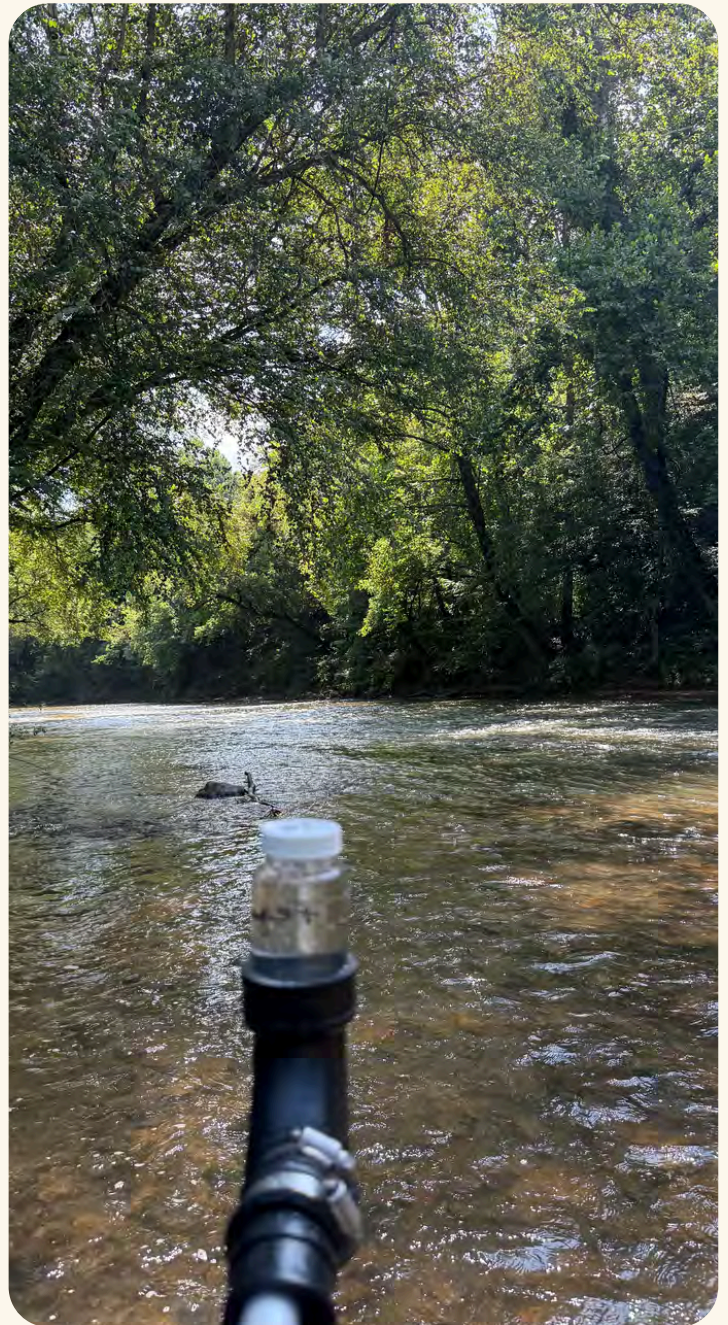


# Swim Guide

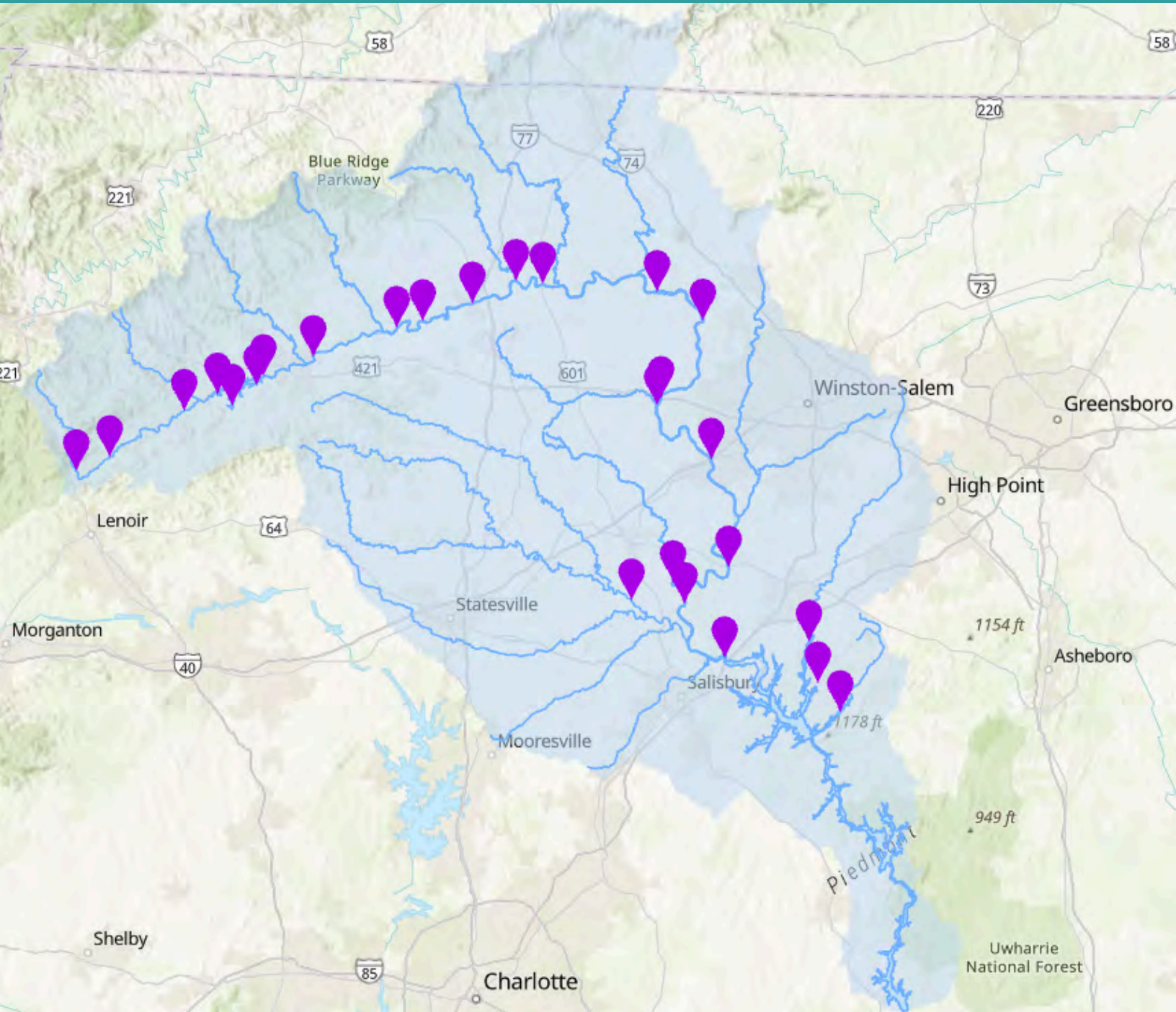


Yadkin Riverkeeper collects water samples at 26 different sites across the watershed to test for E. coli bacteria

From May 21 to August 27, 2025, Yadkin Riverkeeper staff and volunteers collected water samples every Wednesday at swim and paddle accesses on the Yadkin River, Kerr Scott Lake, and High Rock Lake. Yadkin Riverkeeper posted the results every Thursday, notifying the public if the E. coli levels met the EPA's guideline which states the water is safe for recreation when E. coli levels are less than 235 colony forming units per 100mL of water.

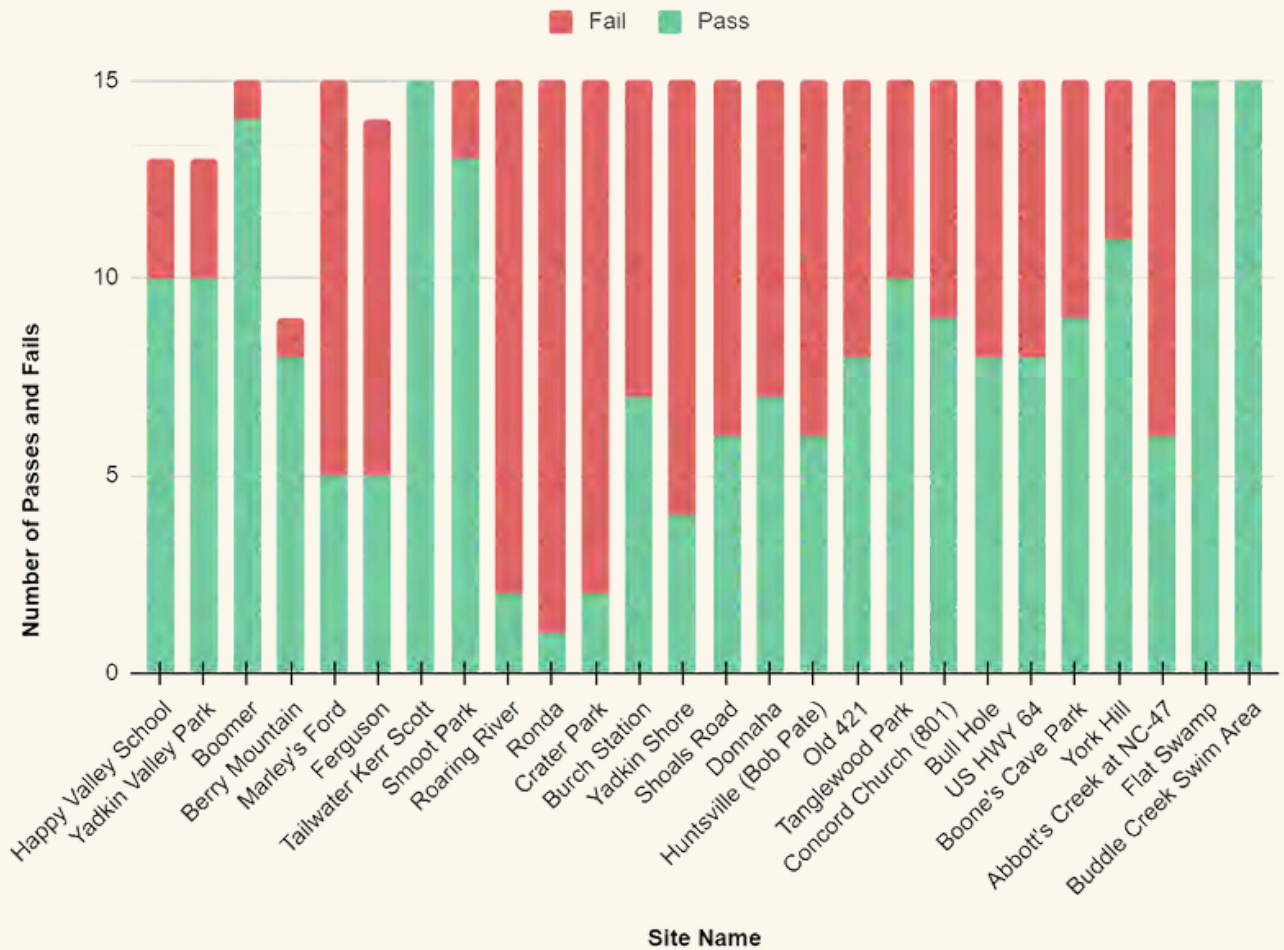
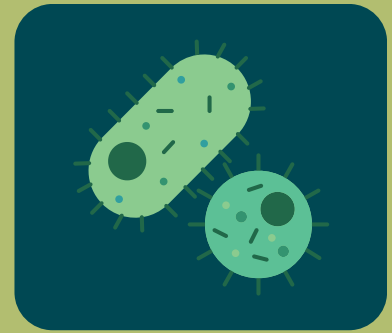


# Swim Guide Site Map



# 2025 E.coli Levels

The bar chart displays the number of failing and passing E. coli values for each Swim Guide site



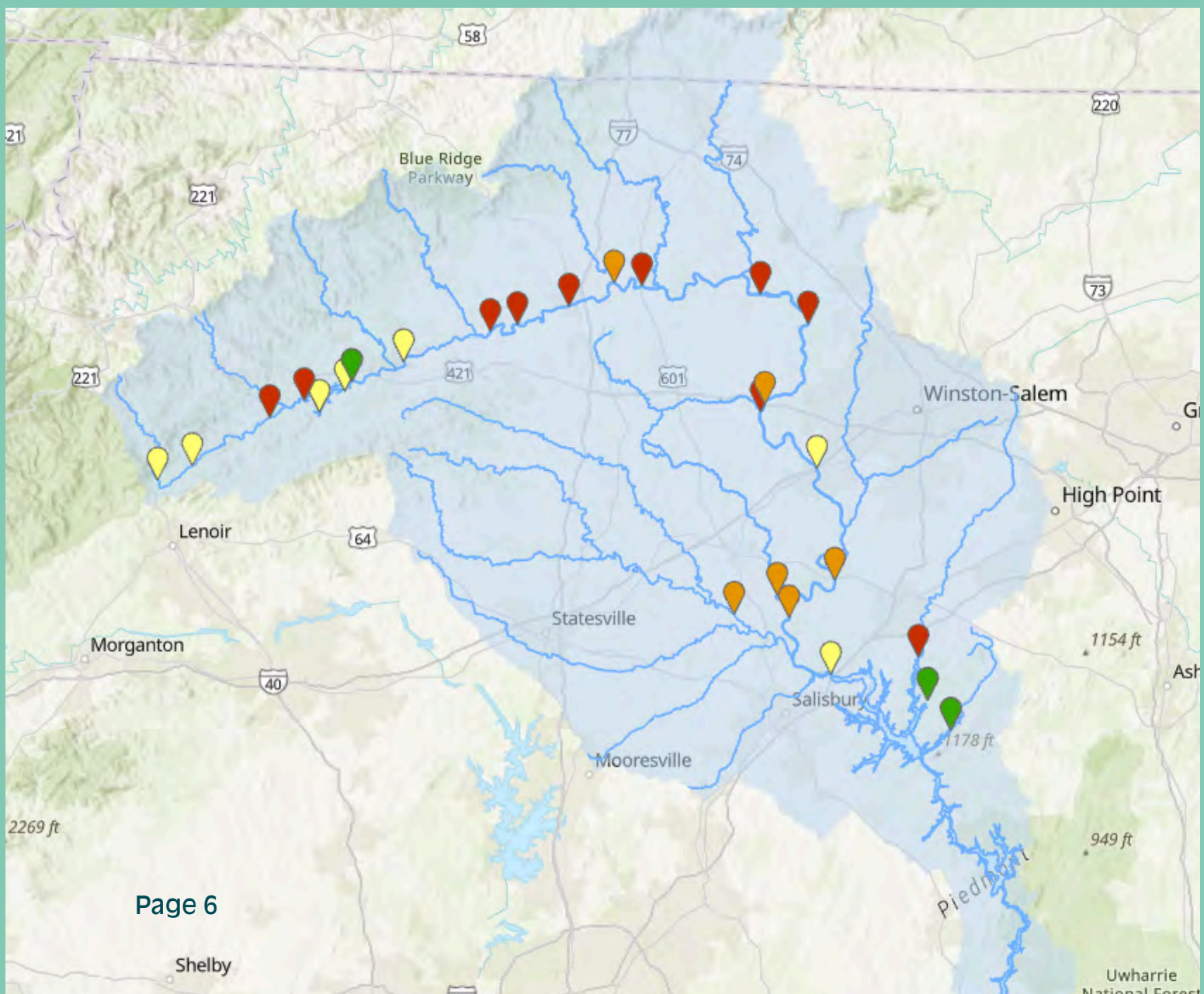
- Of the 378 samples tested, 213 met the E. coli guideline, a 56.3% passing rate
- Ronda had the lowest passing rate, 7% or 1 week out of 15
- The 5 lake sites and the Tailwater at Kerr Scott had the greatest passing rates
- The middle watershed from Roaring River to Elkin is a bacteria hotspot

# E. Coli Hotspots

Swim Guide sampling highlights areas in the watershed experiencing fecal bacteria contamination

## Hotspot Identification

To identify hotspots, YRK considered any site that failed more than 50% of the time a hotspot. The red markers signify sites that failed at least 50% of the time, the orange markers signify sites that failed between 33% and 50%, and yellow markers indicate sites that failed less than or equal to 33% of the time. The green markers are sites that never failed.



# Next Steps

Yadkin Riverkeeper will investigate potential sources of bacteria contamination near the hotspots through community input and water quality monitoring efforts.

## Community Input and ID Threats to the Watershed



What do you see in your part of the watershed? Do you know of any potential sources of contamination?

Yadkin Riverkeeper has identified sewer overflows, land application sites, agricultural fields, cattle in the channel, and animal feeding operations and related manure and chicken litter application as potential sources

## Reviewing Permit Violations and Sewer Overflows



Yadkin Riverkeeper has reviewed land application permits to identify Notices of Violations and identified the number of sewer spills in proximity to the hotspots. Near Ronda, sewer overflows were common with the high levels of rain this summer.

## Targeted Water Sampling



Yadkin Riverkeeper will conduct targeted E. coli sampling upstream and downstream of the hotspots and in close proximity of potential sources such as land application sites.

# A Big Thank You to Our Dedicated Volunteers!

**Cheryl and Jimmie  
Cobb**

**Ormond Loomis**

**Friends of Kerr Scott  
Lake:**

**Beth and Rick Lovette**

**Stan and Iris Carman**

**Jane Lyon**

**Vicki and John Barker**

**Donna McNeil**

**Connie Tosky**

**Rick Chatham**

**Randy Mays**

**Artie Sparrow**

**Annamarie Eustice**

**John Cardarelli**

**Justin Rawley**

**Frank Vogler**

**Braden Mulkey**

**Jack O'Connor**

**Sean Myers**

**Susan Steed**